



#CompuTec
ProcessForce

The Intelligent Solution
for Advanced Manufacturing

#CompuTec **ProcessForce**

A comprehensive and reliable solution for advanced manufacturers that allows users to enjoy SAP Business One's excellence for key business functions combined with an extensive production functionalities

Supply chain data management

Expanded product information

Manage even the most complex recipes and the most precise processes

Plan and analyze the entire production process

Multi-level quality control infrastructure

Complete audit trail

Comprehensive analytics and forecasting tools

Plan your enterprise's growth

Optimize operations and increase customer satisfaction

SAP Business
One

SAP Industry Solution
Excellence Award

SAP Global Solution Partner
Leadership in Innovation Award

SAP Certified
SAP Business One Integration

OUR VERTICAL APPROACH

CompuTecProcessForce was designed in close consultation with industry leaders in the following verticals with careful consideration of their day-to-day operational needs and the challenges their specific industry presents.



Food and Beverage



Chemicals



Plastics



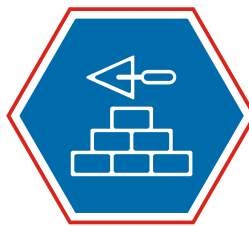
Personal Care



Life Sciences



Mill Products



Building Products



Automotive

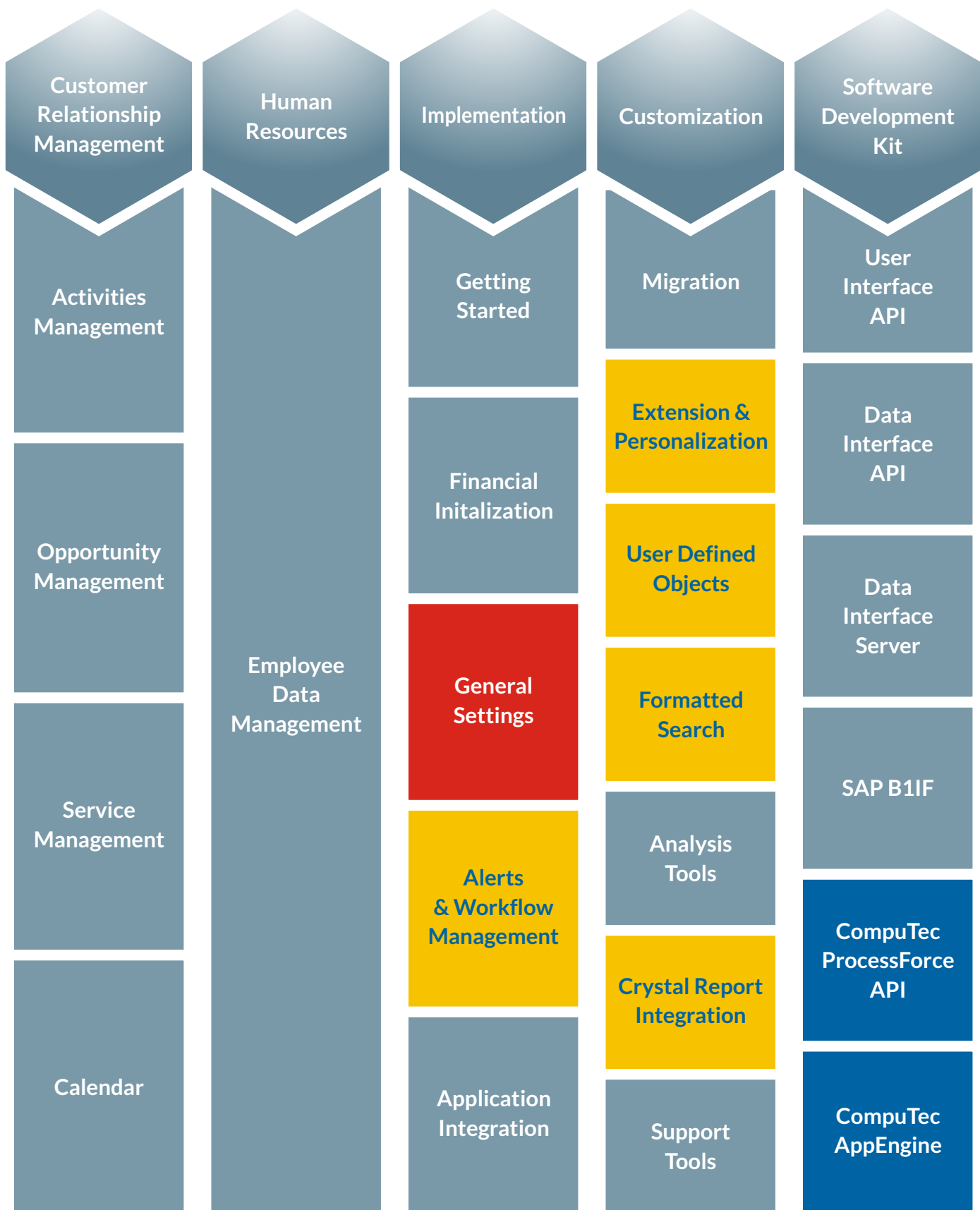
COMPUTEC PROCESSFORCE FOR SAP BUSINESS ONE

- ✓ Works as an integral part of SAP Business One on-premise or in the cloud
- ✓ Available in 27 languages
- ✓ Consolidates all your data about customers, products, suppliers, resources, inventory and processes into one single database ensuring enterprise-wide data accuracy and consistency
- ✓ Eliminates the need to use multiple spreadsheets, accounting software, bespoke software etc.
- ✓ Full auditability of processes and inventory even at a moment's notice
- ✓ Flexible enough to implement change rapidly even in dynamic industries
- ✓ Extensive customization options so you can continue to do business in the way you know works for your company
- ✓ Reduces time spent on manual processes and record-keeping
- ✓ Facilitates on-time delivery and minimize unplanned downtime and outages
- ✓ Minimizes the potential for human error
- ✓ Operates in real-time
- ✓ Insight into where you are running efficiently and where there is room for improvement
- ✓ Fully scalable to up to 500 concurrent users to support your organization's growth
- ✓ Streamlined workflow, data transparency and planning tools mean you can process a larger, more complex orders and fulfill your business's potential while reducing risk

COMPUTEC PROCESSFORCE SOLUTION MAP



The combined SAP Business One and CompuTec ProcessForce solution map provides a visualization of the application components, vertical extensions and tool utilization.



- CompuTec ProcessForce adds new processes, functions and reports
- CompuTec ProcessForce uses existing SAP Business One processes, functions and reports, but extended the functionality
- CompuTec ProcessForce uses existing SAP Business One tools to implement and customise CompuTec ProcessForce objects

PRODUCT DATA MANAGEMENT

With more regulation and increasing customer demands for transparency, it is more important to know exactly what is going into your products than ever before and the sheer volume of data involved can quickly become overwhelming. CompuTec ProcessForce records your data logically and accurately and treats it as a strategic asset. Big data will no longer be a big problem. It will be a big advantage.

- Increase visibility and access relevant data quickly and easily
- Be confident in the integrity of your data and in satisfying regulatory and customer product safety requirements
- Improve supply chain management
- Optimize productivity, resource usage and cycle times
- Facilitate cooperation between teams and departments by ensuring data consistency from a single information repository
- Speed up strategic decision-making backed by analytics and data-driven insights

#	Property Code	Property Name	Acronym	Range From	Range To	Unit	Reference Code	Reference Name
1	01	Viscosity	Thick	0.000	0.000	100		
2	02	Specific Gravity @20degC	Equal	0.000	0.000			
3	03	Solubility in water	Equal	0.000	0.000			
4	04	Viscosity Pressure	Left from	0.000	0.000	mm Hg @20C		
5	05	Odor	Between	0.000	0.000			
6	06	Appearance	Equal	0.000	0.000			
7	07	Color	Not equal	0.000	0.000			
8	08	Melting point	Greater than	0.000	0.000			
9	09	Boiling Point	Greater than or equal	0.000	0.000			
10	10	pH	Less than	0.000	0.000			
11			Less than or equal	0.000	0.000			

Date Details	Properties	Attachments	Quality Control	Returns	Inventory	Complaints
Admission	03.08.17				Warning Date Prior Expiry	
Vendor Manufacturing Date	04.08.17				Warning Date Prior Consume	
Expiry Date	30.06.19					
Expiry Time	00:00					
Best Before Date	30.06.19					
Consume by Date						
Last Inspection Date						
Inspection Date						
Next Inspection Date						
Remarks						

COMPREHENSIVE INGREDIENT, COMPONENT AND PRODUCT DATA

Batch Management	Allocate and manage rules such as expiry and consume by dates and manage shelf life
Storage Rules	Manage stock on a FIFO, FEFO or FMFO basis and maintain the right stock levels for your business
Batch and Serial Numbers	Fully-customizable using pre-defined defaults, templates or manual data input
Ingredient Declarations	For each product and each product revision
Nutrients	Define and manage daily intake recommendations, including on a country by country basis
Country of Origin	Identify the origins of each component part of the finished product quickly and easily
Allergens	Trace allergens and set up allergen alerts and warnings
Pack Serving Sizes	Manage product portions and package volumes
Classifications	Categorize products, e.g. toxic and non-toxic
Properties	Define physical and chemical characteristics and designate properties for quality control tests
Product Groups	Categorize your inventory, set up sub groups and assign codes to ensure optimum safety practices

- Support standardization
- Allocate alternative parts and ingredients when lack of availability demands
- Establish a preferred parts/ingredients list
- Set standard descriptive texts for example hazard instructions, safety text and cleaning information in case of a product spillage

*Now, when we take data from our system,
we can actually rely on it.*

*James Obeng
HPW Fresh & Dry Ltd., Ghana*

MATERIAL SAFETY DATA SHEET (MSDS)

Several regulatory bodies, including the European Union, use set phrases to list information relating to occupational safety and health, special transportation or storage arrangements and potential hazards when working with certain products and substances. By supporting these phrases, CompuTec ProcessForce completely automates the creation of Material Safety Data Sheets so that reassuring your customers of product compliance is quick and painless.

BILL OF MATERIALS

A detailed and precise Bill of Materials (BoM) is crucial to saving time and avoiding mistakes. CompuTec ProcessForce's expanded BoM will help you to eliminate inefficiencies, material planning issues and the associated costs of these blunders.

- Strategize purchasing and make better material planning decisions
- Optimize cost effectiveness
- Share comprehensive data in real-time to ensure consistency, accuracy and quality across your departments and product range
- Ensure timely product delivery
- Improve planning, increase production volume and grow your business

Our business processes are a lot more autonomous, month end is processed easily and accurately, we have better clarity with what is happening in the business and we can track our inventory with more precision.

Bob Zhou,
Australian Dairy Park, Australia

Formula and Recipe Management

- Full formula and recipe scalability
- Percentage weight based recipes
- Yield planning and analysis
- Handle multiple units of measure within one recipe
- Choose how items are managed

Making Complexity Simple

Designed to handle the most complex production processes, CompuTec ProcessForce allows you to drill down through each level of production, even when your final product contains dozens of sub-assemblies which each contain dozens of sub-assemblies and phantom items.

- Unlimited simultaneous product revisions
- Multi-level Bill of Materials
- Set up phantom items for better production planning
- Enforce rules for each stage
- Embed quality control tests and special manufacturing instructions
- Integrate work by subcontractors into your system
- Attach instructions, certifications and quality control procedures to each BoM to make sure your business stays compliant
- Mass item replace function
- Generate reports

Bill of Materials

Item Code

Strawberry Jam 250ml

Type

Internal

Description

strawberry jam 250ml

Revision

001

Quantity

1.000

Total

1.000

Factor

1.000

Yield

250.000

Warehouse

01

Distribution Rules

Project

WSP Def

Batch 500

1.000

UOM Formula

Items		Components			Scrap		Instructions		WIP Items		Attachments								
#	Sequence	Item Code	Description	Revision	Warehouse	Unit	Revision Description	Factor	Formula	Quantity	Scrap %	Yield	Result	Type	Subcontracting	Issue Type	Dimension 2	Batch Result	
1	10	40	FD jar 250ml	40	code80	40	01	default	1.000	=U.Quantity("U_Factor")*Items.U_Factor(10)*Items.U_Quantity(18)*100(100)	1.000	0.000	100.000	1.000	Buy	Backflush	1.000		
2	20	40	FD jar 240ml	40	code80	40	01	default	1.000	=U.Quantity("U_Factor")*Items.U_Factor(20)*Items.U_Quantity(28)*100(100)	1.000	0.000	100.000	1.000	Buy	Backflush	1.000		
3	30	40	FD lemon acid	40	code80	40	01	default	1.000	=U.Quantity("U_Factor")*Items.U_Factor(30)*Items.U_Quantity(38)*100(100)	1.000	0.000	100.000	1.000	Buy	Backflush	0.024		
4	40	40	FD pectin	40	code80	40	01	default	1.000	=U.Quantity("U_Factor")*Items.U_Factor(40)*Items.U_Quantity(48)*100(100)	1.000	0.000	100.000	1.000	Buy	Manual	0.000		
5	50	40	FD water	40	code80	40	01	default	1.000	=U.Quantity("U_Factor")*Items.U_Factor(50)*Items.U_Quantity(58)*100(100)	1.000	0.000	100.000	1.000	Buy	Manual	0.019		
6	60	40	FD Strawberry	40	code80	40	01	default	1.000	=U.Quantity("U_Factor")*Items.U_Factor(60)*Items.U_Quantity(68)*100(100)	1.000	0.000	100.000	1.000	Buy	Manual	0.500		
7	70	40	Sugar	40	code80	40	01	X00	default	1.000	=U.Quantity("U_Factor")*Items.U_Factor(70)*Items.U_Quantity(78)*100(100)	1.000	0.000	100.000	1.000	Buy	Manual	0.140	
8	80	40	Water	40	code80	40	01	LT	default	1.000	=U.Quantity("U_Factor")*Items.U_Factor(80)*Items.U_Quantity(88)*100(100)	1.000	0.000	100.000	1.000	Buy	Manual	0.000	
9	90	40	Label-01	40	code80	40	01	BA	default	1.000	=U.Quantity("U_Factor")*Items.U_Factor(90)*Items.U_Quantity(98)*100(100)	1.000	0.000	100.000	1.000	Buy	Backflush	1.000	
10	0								0.000		0.000	0.000	0.000					0.000	

Remarks

OK

Cancel

You Can Also

Product Routings

CompuTec ProcessForce lets you assign routings to production items and bind specific items to each operation helping you to determine the best machines and equipment for each process and allowing you to consider the unique characteristics of each product revision in organizing workflow.

- Set up unlimited routings using a wide range of machinery and technology
- Assign alternative routings for when capacity is under strain
- Save time and reduce costs by setting up reusable sequences
- Make sure materials end up where they are needed exactly when they are needed

Co-product, by-product, WIP items and scrap management

- Avoid unnecessary waste
- Maximize what you can re-use
- See new opportunities for profit

Costed Bill of Materials (BoM)

- Ease the process of determining product costs
- Compare costs of different revisions
- Cost categories allow you to see how future costing changes will affect your business

Costed Bill of Materials																			
Item Code		Item Name		Cost Category		TC Material		TC Resource		TC Fixed O/H		TC Variable O/H		TC Total		GC Batch Size			
Item Code		Item Name		Cost Category		TC Material		TC Resource		TC Fixed O/H		TC Variable O/H		TC Total		GC Batch Size			
Item Code		Item Name		Cost Category		TC Material		TC Resource		TC Fixed O/H		TC Variable O/H		TC Total		GC Batch Size			
Item Code		Item Name		Cost Category		TC Material		TC Resource		TC Fixed O/H		TC Variable O/H		TC Total		GC Batch Size			
Item Code		Item Name		Cost Category		TC Material		TC Resource		TC Fixed O/H		TC Variable O/H		TC Total		GC Batch Size			
Item Code		Item Name		Cost Category		TC Material		TC Resource		TC Fixed O/H		TC Variable O/H		TC Total		GC Batch Size			
Item Code		Item Name		Cost Category		TC Material		TC Resource		TC Fixed O/H		TC Variable O/H		TC Total		GC Batch Size			
Item Code		Item Name		Cost Category		TC Material		TC Resource		TC Fixed O/H		TC Variable O/H		TC Total		GC Batch Size			
Item Code		Item Name		Cost Category		TC Material		TC Resource		TC Fixed O/H		TC Variable O/H		TC Total		GC Batch Size			
Item Code		Item Name		Cost Category		TC Material		TC Resource		TC Fixed O/H		TC Variable O/H		TC Total		GC Batch Size			
Item Code		Item Name		Cost Category		TC Material		TC Resource		TC Fixed O/H		TC Variable O/H		TC Total		GC Batch Size			
Item Code		Item Name		Cost Category		TC Material		TC Resource		TC Fixed O/H		TC Variable O/H		TC Total		GC Batch Size			
Item Code		Item Name		Cost Category		TC Material		TC Resource		TC Fixed O/H		TC Variable O/H		TC Total		GC Batch Size			
Item Code		Item Name		Cost Category		TC Material		TC Resource		TC Fixed O/H		TC Variable O/H		TC Total		GC Batch Size			
Item Code		Item Name		Cost Category		TC Material		TC Resource		TC Fixed O/H		TC Variable O/H		TC Total		GC Batch Size			
Item Code		Item Name		Cost Category		TC Material		TC Resource		TC Fixed O/H		TC Variable O/H		TC Total		GC Batch Size			
Item Code		Item Name		Cost Category		TC Material		TC Resource		TC Fixed O/H		TC Variable O/H		TC Total		GC Batch Size			
Item Code		Item Name		Cost Category		TC Material		TC Resource		TC Fixed O/H		TC Variable O/H		TC Total		GC Batch Size			
Item Code		Item Name		Cost Category		TC Material		TC Resource		TC Fixed O/H		TC Variable O/H		TC Total		GC Batch Size			
Item Code		Item Name		Cost Category		TC Material		TC Resource		TC Fixed O/H		TC Variable O/H		TC Total		GC Batch Size			
Item Code		Item Name		Cost Category		TC Material		TC Resource		TC Fixed O/H		TC Variable O/H		TC Total		GC Batch Size			
Item Code		Item Name		Cost Category		TC Material		TC Resource		TC Fixed O/H		TC Variable O/H		TC Total		GC Batch Size			
Item Code		Item Name		Cost Category		TC Material		TC Resource		TC Fixed O/H		TC Variable O/H		TC Total		GC Batch Size			
Item Code		Item Name		Cost Category		TC Material		TC Resource		TC Fixed O/H		TC Variable O/H		TC Total		GC Batch Size			
Item Code		Item Name		Cost Category		TC Material		TC Resource		TC Fixed O/H		TC Variable O/H		TC Total		GC Batch Size			
Item Code		Item Name		Cost Category		TC Material		TC Resource		TC Fixed O/H		TC Variable O/H		TC Total		GC Batch Size			
Item Code		Item Name		Cost Category		TC Material		TC Resource		TC Fixed O/H		TC Variable O/H		TC Total		GC Batch Size			
Item Code		Item Name		Cost Category		TC Material		TC Resource		TC Fixed O/H		TC Variable O/H		TC Total		GC Batch Size			
Item Code		Item Name		Cost Category		TC Material		TC Resource		TC Fixed O/H		TC Variable O/H		TC Total		GC Batch Size			
Item Code		Item Name		Cost Category		TC Material		TC Resource		TC Fixed O/H		TC Variable O/H		TC Total		GC Batch Size			
Item Code		Item Name		Cost Category		TC Material		TC Resource		TC Fixed O/H		TC Variable O/H		TC Total		GC Batch Size			
Item Code		Item Name		Cost Category		TC Material		TC Resource		TC Fixed O/H		TC Variable O/H		TC Total		GC Batch Size			
Item Code		Item Name		Cost Category		TC Material		TC Resource		TC Fixed O/H		TC Variable O/H		TC Total		GC Batch Size			
Item Code		Item Name		Cost Category		TC Material		TC Resource		TC Fixed O/H		TC Variable O/H		TC Total		GC Batch Size			
Item Code		Item Name		Cost Category		TC Material		TC Resource		TC Fixed O/H		TC Variable O/H		TC Total		GC Batch Size			
Item Code		Item Name		Cost Category		TC Material		TC Resource		TC Fixed O/H		TC Variable O/H		TC Total		GC Batch Size			
Item Code		Item Name		Cost Category		TC Material		TC Resource		TC Fixed O/H		TC Variable O/H		TC Total		GC Batch Size			
Item Code		Item Name		Cost Category		TC Material		TC Resource		TC Fixed O/H		TC Variable O/H		TC Total		GC Batch Size			
Item Code		Item Name		Cost Category		TC Material		TC Resource		TC Fixed O/H		TC Variable O/H		TC Total		GC Batch Size			
Item Code		Item Name		Cost Category		TC Material		TC Resource		TC Fixed O/H		TC Variable O/H		TC Total		GC Batch Size			
Item Code		Item Name		Cost Category		TC Material		TC Resource		TC Fixed O/H		TC Variable O/H		TC Total		GC Batch Size			
Item Code		Item Name		Cost Category		TC Material		TC Resource		TC Fixed O/H		TC Variable O/H		TC Total		GC Batch Size			
Item Code		Item Name		Cost Category		TC Material		TC Resource		TC Fixed O/H		TC Variable O/H		TC Total		GC Batch Size			
Item Code		Item Name		Cost Category		TC Material		TC Resource		TC Fixed O/H		TC Variable O/H		TC Total		GC Batch Size			
Item Code		Item Name		Cost Category		TC Material		TC Resource		TC Fixed O/H		TC Variable O/H		TC Total		GC Batch Size			
Item Code		Item Name		Cost Category		TC Material		TC Resource		TC Fixed O/H		TC Variable O/H		TC Total		GC Batch Size			
Item Code		Item Name		Cost Category		TC Material		TC Resource		TC Fixed O/H		TC Variable O/H		TC Total		GC Batch Size			
Item Code		Item Name		Cost Category		TC Material		TC Resource		TC Fixed O/H		TC Variable O/H		TC Total		GC Batch Size			
Item Code		Item Name		Cost Category		TC Material		TC Resource		TC Fixed O/H		TC Variable O/H		TC Total		GC Batch Size			
Item Code		Item Name		Cost Category		TC Material		TC Resource		TC Fixed O/H		TC Variable O/H		TC Total		GC Batch Size			
Item Code		Item Name		Cost Category		TC Material		TC Resource		TC Fixed O/H		TC Variable O/H		TC Total		GC Batch Size			
Item Code		Item Name		Cost Category		TC Material		TC Resource		TC Fixed O/H		TC Variable O/H		TC Total		GC Batch Size			
Item Code		Item Name		Cost Category		TC Material		TC Resource		TC Fixed O/H		TC Variable O/H		TC Total		GC Batch Size			
Item Code		Item Name		Cost Category		TC Material		TC Resource		TC Fixed O/H		TC Variable O/H		TC Total		GC Batch Size			
Item Code		Item Name		Cost Category		TC Material		TC Resource		TC Fixed O/H		TC Variable O/H		TC Total		GC Batch Size			
Item Code		Item Name		Cost Category		TC Material		TC Resource		TC Fixed O/H		TC Variable O/H		TC Total		GC Batch Size			
Item Code		Item Name		Cost Category		TC Material		TC Resource		TC Fixed O/H		TC Variable O/H		TC Total		GC Batch Size			
Item Code		Item Name		Cost Category		TC Material		TC Resource		TC Fixed O/H		TC Variable O/H		TC Total		GC Batch Size			
Item Code		Item Name		Cost Category		TC Material		TC Resource		TC Fixed O/H		TC Variable O/H		TC Total		GC Batch Size			
Item Code		Item Name		Cost Category		TC Material		TC Resource		TC Fixed O/H		TC Variable O/H		TC Total		GC Batch Size			
Item Code		Item Name		Cost Category		TC Material		TC Resource		TC Fixed O/H		TC Variable O/H		TC Total		GC Batch Size			
Item Code		Item Name		Cost Category		TC Material		TC Resource		TC Fixed O/H		TC Variable O/H		TC Total		GC Batch Size			
Item Code		Item Name		Cost Category		TC Material		TC Resource		TC Fixed O/H		TC Variable O/H		TC Total		GC Batch Size			
Item Code		Item Name		Cost Category		TC Material		TC Resource		TC Fixed O/H		TC Variable O/H		TC Total		GC Batch Size			
Item Code		Item Name		Cost Category		TC Material		TC Resource		TC Fixed O/H		TC Variable O/H		TC Total		GC Batch Size			
Item Code		Item Name		Cost Category		TC Material		TC Resource		TC Fixed O/H		TC Variable O/H		TC Total		GC Batch Size			
Item Code		Item Name		Cost Category		TC Material		TC Resource		TC Fixed O/H		TC Variable O/H		TC Total		GC Batch Size			
Item Code		Item Name		Cost Category		TC Material		TC Resource		TC Fixed O/H		TC Variable O/H		TC Total		GC Batch Size			
Item Code		Item Name		Cost Category		TC Material		TC Resource		TC Fixed O/H		TC Variable O/H		TC Total		GC Batch Size			
Item Code		Item Name		Cost Category		TC Material		TC Resource		TC Fixed O/H		TC Variable O/H		TC Total		GC Batch Size			
Item Code		Item Name		Cost Category		TC Material		TC Resource		TC Fixed O/H		TC Variable O/H		TC Total		GC Batch Size			
Item Code		Item Name		Cost Category		TC Material		TC Resource		TC Fixed O/H		TC Variable O/H		TC Total		GC Batch Size			
Item Code		Item Name		Cost Category		TC Material		TC Resource		TC Fixed O/H		TC Variable O/H		TC Total		GC Batch Size			
Item Code		Item Name		Cost Category		TC Material		TC Resource		TC Fixed O/H		TC Variable O/H		TC Total		GC Batch Size			
Item Code		Item Name		Cost Category		TC Material		TC Resource		TC Fixed O/H		TC Variable O/H		TC Total		GC Batch Size			
Item Code		Item Name		Cost Category		TC Material		TC Resource		TC Fixed O/H		TC Variable O/H		TC Total		GC Batch Size			
Item Code		Item Name		Cost Category		TC Material		TC Resource		TC Fixed O/H		TC Variable O/H		TC Total		GC Batch Size			
Item Code		Item Name		Cost Category		TC Material		TC Resource		TC Fixed O/H		TC Variable O/H		TC Total		GC Batch Size			
Item Code		Item Name		Cost Category		TC Material		TC Resource		TC Fixed O/H		TC Variable O/H		TC Total		GC Batch Size			
Item Code		Item Name		Cost Category		TC Material		TC Resource		TC Fixed O/H		TC Variable O/H		TC Total		GC Batch Size			
Item Code		Item Name		Cost Category		TC Material		TC Resource		TC Fixed O/H		TC Variable O/H		TC Total		GC Batch Size			
Item Code		Item Name		Cost Category		TC Material		TC Resource		TC Fixed O/H		TC Variable O/H		TC Total		GC Batch Size			
Item Code		Item Name		Cost Category		TC Material		TC Resource		TC Fixed O/H		TC Variable O/H		TC Total		GC Batch Size			
Item Code		Item Name		Cost Category		TC Material		TC Resource		TC Fixed O/H		TC Variable O/H		TC Total		GC Batch Size			
Item Code		Item Name		Cost Category		TC Material		TC Resource		TC Fixed O/H		TC Variable O/H		TC Total		GC Batch Size			
Item Code		Item Name		Cost Category		TC Material		TC Resource		TC Fixed O/H		TC Variable O/H		TC Total		GC Batch Size			
Item Code		Item Name		Cost Category		TC Material		TC Resource		TC Fixed O/H		TC Variable O/H		TC Total		GC Batch Size			
Item Code		Item Name		Cost Category		TC Material		TC Resource		TC Fixed O/H		TC Variable O/H		TC Total		GC Batch Size			
Item Code		Item Name		Cost Category		TC Material		TC Resource		TC Fixed O/H		TC Variable O/H		TC Total		GC Batch Size			
Item Code		Item Name		Cost Category		TC Material		TC Resource		TC Fixed O/H		TC Variable O/H		TC Total		GC Batch Size			
Item Code		Item Name		Cost Category		TC Material		TC Resource		TC Fixed O/H		TC Variable O/H		TC Total		GC Batch Size			
Item Code		Item Name		Cost Category		TC Material		TC Resource		TC Fixed O/H		TC Variable O/H		TC Total		GC Batch Size			
Item Code		Item Name		Cost Category		TC Material		TC Resource		TC Fixed O/H		TC Variable O/H		TC Total		GC Batch Size			
Item Code		Item Name		Cost Category		TC Material		TC Resource		TC Fixed O/H		TC Variable O/H		TC Total		GC Batch Size			
Item Code		Item Name		Cost Category		TC Material		TC Resource		TC Fixed O/H		TC Variable O/H		TC Total		GC Batch Size			
Item Code		Item Name		Cost Category		TC Material		TC Resource		TC Fixed O/H		TC Variable O/H		TC Total		GC Batch Size			
Item Code		Item Name		Cost Category		TC Material		TC Resource		TC Fixed O/H		TC Variable O/H		TC Total		GC Batch Size			
Item Code		Item Name		Cost Category		TC Material		TC Resource		TC Fixed O/H		TC Variable O/H		TC Total		GC Batch Size			
Item Code		Item Name		Cost Category		TC Material		TC Resource		TC Fixed O/H		TC Variable O/H		TC Total		GC Batch Size			
Item Code		Item Name		Cost Category		TC Material		TC Resource		TC Fixed O/H		TC Variable O/H		TC Total		GC Batch Size			
Item Code		Item Name		Cost Category		TC Material		TC Resource		TC Fixed O/H		TC Variable O/H		TC Total		GC Batch Size			
Item Code		Item Name		Cost Category		TC Material		TC Resource		TC Fixed O/H		TC Variable O/H		TC Total		GC Batch Size			
Item Code		Item Name		Cost Category		TC Material		TC Resource		TC Fixed O/H		TC Variable O/H		TC Total		GC Batch Size			
Item Code		Item Name		Cost Category		TC Material		TC Resource		TC Fixed O/H		TC Variable O/H		TC Total		GC Batch Size			
Item Code		Item Name		Cost Category		TC Material		TC Resource		TC Fixed O/H		TC Variable O/H		TC Total		GC Batch Size			
Item Code		Item Name		Cost Category		TC Material		TC Resource		TC Fixed O/H		TC Variable O/H		TC Total		GC Batch Size			
Item Code		Item Name		Cost Category		TC Material		TC Resource		TC Fixed O/H		TC Variable O/H		TC Total		GC Batch Size			
Item Code		Item Name		Cost Category		TC Material		TC Resource		TC Fixed O/H		TC Variable O/H		TC Total		GC Batch Size			
Item Code		Item Name		Cost Category		TC Material		TC Resource		TC Fixed O/H		TC Variable O/H		TC Total		GC Batch Size			
Item Code		Item Name		Cost Category		TC Material		TC Resource		TC Fixed O/H		TC Variable O/H		TC Total		GC Batch Size			
Item Code		Item Name		Cost Category		TC Material		TC Resource		TC Fixed O/H		TC Variable O/H		TC Total		GC Batch Size			
Item Code		Item Name		Cost Category		TC Material		TC Resource		TC Fixed O/H		TC Variable O/H		TC Total		GC Batch Size			
Item Code		Item Name		Cost Category		TC Material		TC Resource		TC Fixed O/H		TC Variable O/H		TC Total		GC Batch Size			
Item Code		Item Name		Cost Category		TC Material		TC Resource		TC Fixed O/H		TC Variable O/H		TC Total		GC Batch Size			
Item Code		Item Name		Cost Category		TC Material		TC Resource		TC Fixed O/H		TC Variable O/H		TC Total		GC Batch Size			
Item Code		Item Name		Cost Category		TC Material		TC Resource		TC Fixed O/H		TC Variable O/H		TC Total		GC Batch Size			
Item Code		Item Name		Cost Category		TC Material		TC Resource		TC Fixed O/H									

SCHEDULING

CompuTec ProcessForce's scheduling solution provides you with all the tools you need to manage time and resource limitations and ensure that the final products reach your customers on time.

- Allocate resources, tooling and labor according to:
 - Resource status and capacity
 - Time constraints
 - Overlapping processes
- Forwards and backwards production scheduling
- Set timings for each stage of production
- Manage your production calendar and calculate resource and production capacities with precision
- Manage Manufacturing Orders based on complex Multi-level Bills of Materials with ease
- Define alternative product routings when necessary
- Manage advanced relations between processes
- Record material consumption for all operations

THE SCHEDULING BOARD

A simple but effective planning tool presented in table format.

- Manage production dates, scheduling methods, priorities, completion dates and more
- Straightforward data organization and management with advanced filtering options
- Oversee changes and see how they affect production scheduling
- View scheduling for all levels of multi-level Bills of Materials

RESOURCE PLANNING BOARD

- Filter and sort Manufacturing Orders and review details of each one
- Manage resources and resource groups and the Manufacturing Orders associated with them
- Check resource capacity
- View and organize the jobs which are waiting for resources to become available
- Manage and assign tools to specific resources
- Receive alternative resource suggestions
- Easy to use drag and drop interface

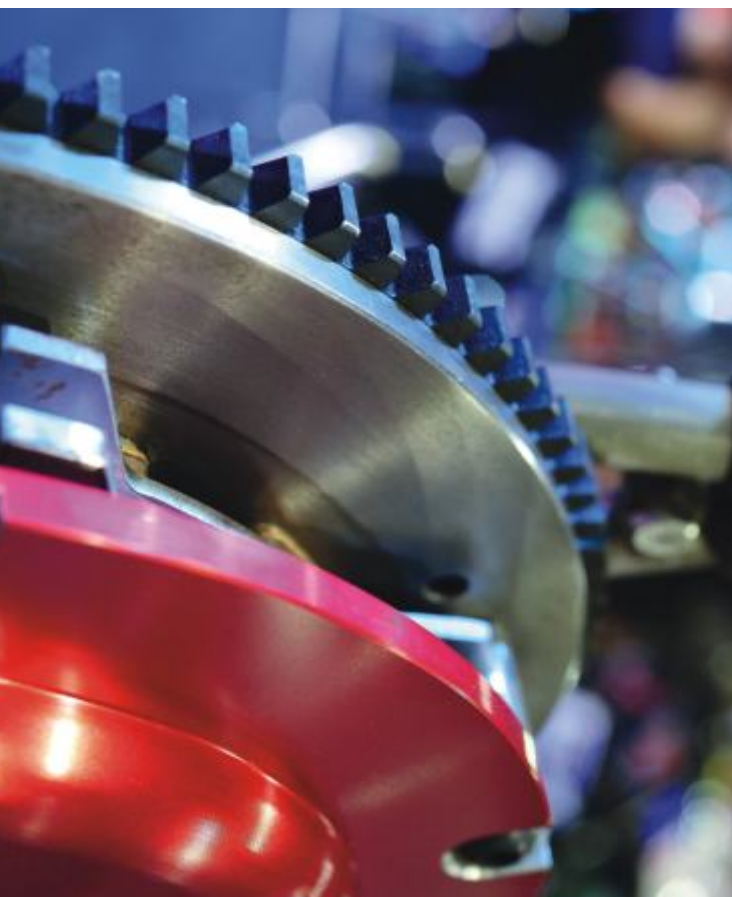
DYNAMIC GANTT CHART

- Easy to modify and reschedule tasks via drag and drop
- Extensive filtering and sorting options
- Intuitive interface e.g. color-coded work time display
- Monitor the details of each order
- Plan immediate and long-term future operations
- Display current status, relevant historical data and pending tasks for each resource
- Spread orders across multiple resources
- Identify overloaded assets and receive system recommendations about alternative resources
- Manage interruptions to the manufacturing process to facilitate continuous production
- Receive notifications of holdups due to material shortages
- "Lock" set tasks into designated time periods
- Block all Manufacturing Orders
- See the knock-on effects of changes to the Gantt Chart across your operations

PLANNING USING RELATIONSHIPS

- Initiate work on Manufacturing Orders when you are sure all the pieces are in place
- Prioritize urgent or important orders
- Monitor the relationships between various stages of the production process
- Schedule Manufacturing Orders so they are completed according to customer agreements
- Identify scheduling conflicts immediately as they arise

CompuTec ProcessForce will send users alerts and when production capacity is exceeded or delivery times cannot be met. The nearest possible delivery date will be calculated too.





MANUFACTURING ORDERS

CompuTec ProcessForce's Manufacturing Order gives you meticulous control over planning, executing and recording production activities and provide you with the tools you need to make sure your factory is running efficiently and you meet the delivery dates you have promised.

- Order dependent recipes and routings
 - Modify product structures and production processes to manage everyday changes in production
- Backwards and forwards scheduling
 - Plan production start and end dates
 - Accurate lead time calculation
 - Strategic order prioritization
- Wide-range of document creation options
 - Issue to Production
 - Receipt from Production
 - Stock Transfer documents
- Register co-products as they are manufactured
- Comprehensive usable and technological scrap management tools
- Control document workflow and task progress using the CompuTec ProcessForce relationship map
- Create large Manufacturing Orders based on multiple Sales Orders
- Manage and optimize warehouse movements
 - Check availability of materials and component parts
 - Receive alerts when shortages occur
 - Gain insights into picking and receiving processes
- Subcontracting management features:
 - Define your suppliers and specify the scope of their service
 - Generate Purchase Requests or Purchase Orders for services
 - Procurement and material reports
- Record worktime – enhanced functionality when used in conjunction with CompuTec PDC (Plant Data Capture)
- Set up quality control testing rules according to customer requirements
- Oversee the relationships between all the operations associated with a particular manufacturing order
- Use the operation bind to ensure the correct materials are issued to each operation
- Initiate orderless production
 - Use statistical data and projections to plan production
 - Spread out production evenly to avoid bottlenecks and backlogs
 - Track cost details throughout the entire process

BATCH CONTROL

With the help of CompuTec ProcessForce's batch management functions, you'll be able to track exactly who you bought inventory from, who you sold it to and everything that happened to it in-between making your life easier in terms of quality control, efficiency of workflow and customer relations.

- Batch consumption management
- Batch distribution management
- Access detailed data about each and every batch at the click of a button
- Batch transaction reports to trace all batch related documents and transactions

Expanded Batch Master Data

CompuTec ProcessForce's Batch Master Data keeps records of all the respective data your business needs.

- Date details e.g. admission, manufacture, expiry and inspection dates
- Properties e.g. physical or chemical definitions and nutritional information
- Quality control data
- Returns and complaints associated with each batch
- Custom fields to serve your business needs
- Set up batch templates to simplify and speed up batch creation

Batch and Serial Number management

Fully customizable batch and serial number generation tools mean that you can build the exact serial and batch numbers that you want in whatever format you want. You can use any information in your SAP Business One database, your own-predefined codes and system generated numbers and changing your set-up takes just a few minutes.

Shelf-Life management

- Optimize your picking methods
- Limit spoilage and deterioration of perishable goods
- Avoid costly returns and spoiled stock

Expiry dates play a huge role in consumer purchase decisions. By tightening up your shelf-life management procedures the retailers that you supply will have more lead time on the expiration dates of your products, helping them in turn to shift more product and most importantly boost your sales orders.

- Manage each batch on a FIFO, FEFO or FMFO basis
- Color coded expiry date warning system
- Customizable system alerts
- Advanced expiry date calculation engine
- Integrate minimum guaranteed shelf-life agreements into your system



BATCH TRACEABILITY

While inventory transparency is mandatory in almost every industry these days, entering and maintaining this kind of data manually is time-consuming and prone to errors. Using the CompuTec ProcessForce end-to-end Batch Traceability features, you can trace any batch throughout its entire lifecycle from its arrival at your production facility, through the production process to the final goods delivery to your customer with speed and accuracy to keep up with the demands of even the most heavily regulated industries.

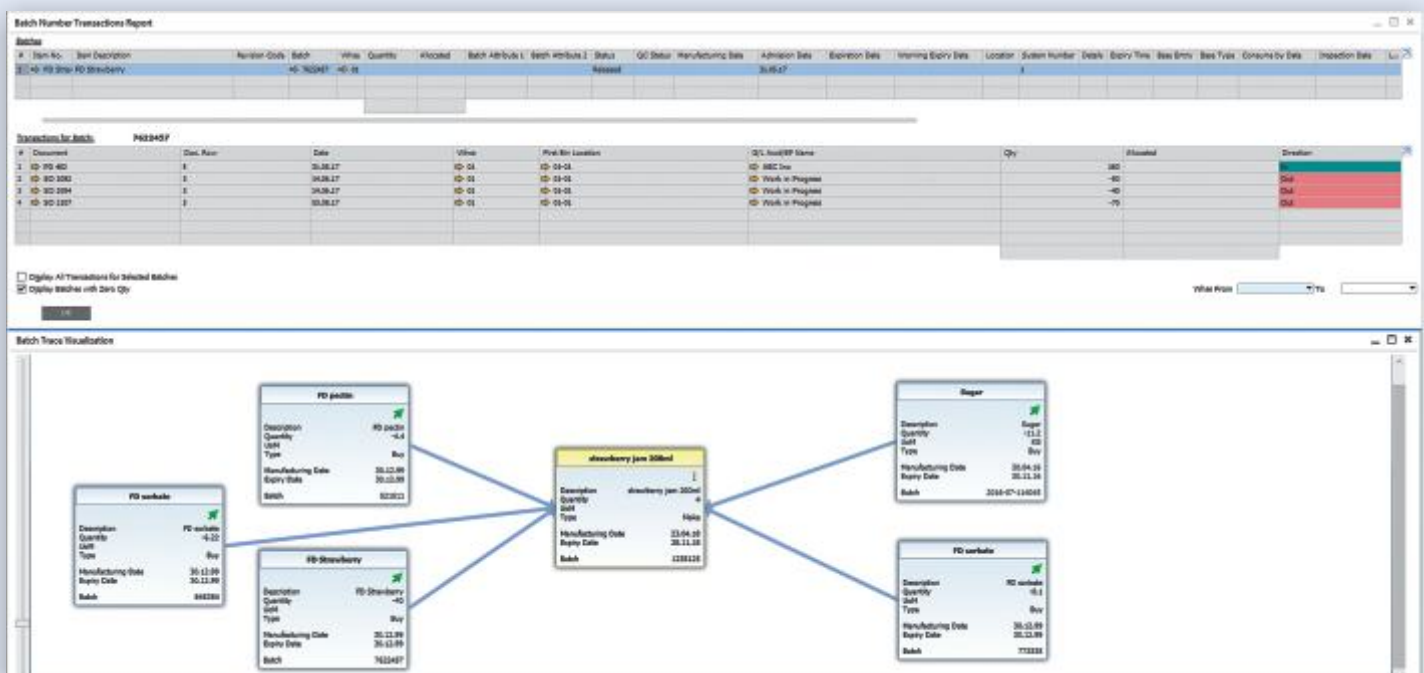
- Withdraw inventory from the supply chain with ease
- Follow up complaints efficiently
- Monitor and trace allergens and hazardous materials
- Pinpoint the root cause of quality control issues
- Identify your best and worst suppliers
- Gain control over final product quality
- Support product aftercare, upgrade customer service and issue warranties with confidence

Batch Genealogy Trees

- Visualize your inventory's journey from start to finish
- Use any stage of the product lifecycle as a starting point
- Full batch history
- View complex product relationships

In order to ensure compliance with industry regulations and standards, our inventory needs to be fully traceable at any given moment and the bigger we get, the more complex that becomes. CompuTec ProcessForce has taken the hassle out of that whole process and eliminated that particular barrier to our company's growth.

*Jaymie Crook,
Bosco and Roxy's, Canada*



END-TO-END QUALITY MANAGEMENT

Today consumers are more demanding than ever before. There is no space for mistakes in today's fast-paced market which is why we designed CompuTec ProcessForce to provide a robust infrastructure for Quality Control at every stage of production, from the moment the goods arrive in your facility to the moment the final product is loaded onto the delivery vehicle.

Quality Control throughout the entire product life cycle

- In-bound testing upon receipt to the warehouse including Delivery Vehicle Inspection
- In-process testing during each phase of the production cycle
- Inventory testing including batch re-testing and other pre-dispatch checks

Quality Control Management tools

- Use business events, customizable triggers and SAP Business One Alert functions to advise users that a Quality Control Test is required to be performed.
- Automatic Quality Control test form generation on user-defined transactions and Manufacturing Order status changes
- Manage tests individually or in test pools (perform the same test on multiple samples)
- Test creation wizard which ensures no test gets missed
- View existing Quality Control tests by Manufacturing Order
- Define resources and tools to be used for testing and monitor consumption of materials used for Quality Control testing
- Specify even very complex testing rules and procedures as well as testing frequency
- Stipulate additional requirements and manage them using User-Defined Fields
- Designate Quality Control inspectors according to specialization, warehouse or accreditation

Customizable test result management

- Define test properties and defects
- Record multiple test results for each Quality Control test
- Assign test property and defect codes
- Manage batch or serial number status throughout the Quality Control process
- Group test results
- Track frequency of specific quality control passes and fails for reporting and analysis purposes

Fully integrated Compliance Management

according to the regulations of the FDA, EFSA, FSANZ, ECHA, EPA or any other regulatory body.

Generate Non-Conforming Materials Reports

- Record additional data about test failures
- Initiate action plans to remedy or determine the cause of failed Quality Control tests

Certificate of Analysis

- Confirms that each product meets all regulations and requirements
- Fully customizable according to each customer's needs
- Send Certificate of Analysis to your customers automatically



WHAT

Test and Item Properties to be tested

WHEN

The frequency of testing

WHERE

The transaction the test will be performed on

WITH

The resources and items that are used within the testing process

Test Protocol

Code: B01_100
Item Code: Plastic Bottle A1
Item Name: Plastic Bottle A1
Unit: PCS
Revision Code: code00
QC Warehouse Cc: 01
QC Bin Code: 01-01
Project: Capi01
Used Count: 4

Name: B01_100
Template Code: B1
Template Name: In-line Testing
Group Name: Standard Products
Valid from: 27.03.17
Valid to: 28.03.22
Create Date: 23.11.16
Update Date: 23.11.16

#	Item Property Code	Item Property Name	Expression	Value from	Value to	Unit	Reference Code	Reference Name	Remarks
1	06	Appearance	Equals	1.000	2.000				
2	07	Colour	Between	0.000	1.000		02	Red	
3	12	Grade	Equals	1.000	2.000		15	A	
4	18	Length	Between	120.000	124.000	mm			
5	13	Weight	Between	35.000	37.000	g/m			
6	15	Width	Between	55.000	60.000	mm			
7				0.000	0.000				

17.01.19
16:08

SAP

Quality Control Test

Test Protocol No.: B01_100
Description: B01_100
Item Code: Plastic Bottle A1
Item Name: Plastic Bottle A1
Item Unit: PCS
Revision Code: code00
QC Warehouse Cc: 01
QC Bin Code: 01-01
Complaint No.:
Project: Capi01
Sample Id: 2411414
Used Count: 1

Series: Primary
QC Pool No.: 438
Inspector: Mark Jones
Electronic Signatu: Created
Status: Created
Created Date: 17.01.19
Started Date: 17.01.19
On-Hold Date:
Waiting MCHM Dat:
Closed Date:
Test Status: To Be Determined
Pass/Fail Date:

#	Item Property Code	Item Property Name	Expression	Value from	Value to	Unit	Tested Value	Reference Code	Reference Name	Tested Reference Code	Tested Reference Name	Pass/Fail	Reason Code
1	06	Appearance	Equals	1.000	2.000		1.000	06	Qty			Pass	
2	07	Colour	Between	0.000	1.000		1.000	02	Red			Pass	
3	12	Grade	Equals	1.000	2.000		1.500	15	A			Pass	
4	18	Length	Between	120.000	124.000	mm	0.000					Fail	
5	13	Weight	Between	35.000	37.000	g/m	0.000					Fail	
6	15	Width	Between	55.000	60.000	mm	0.000					Fail	
7				0.000	0.000		0.000						

Add Cancel

You Can Also

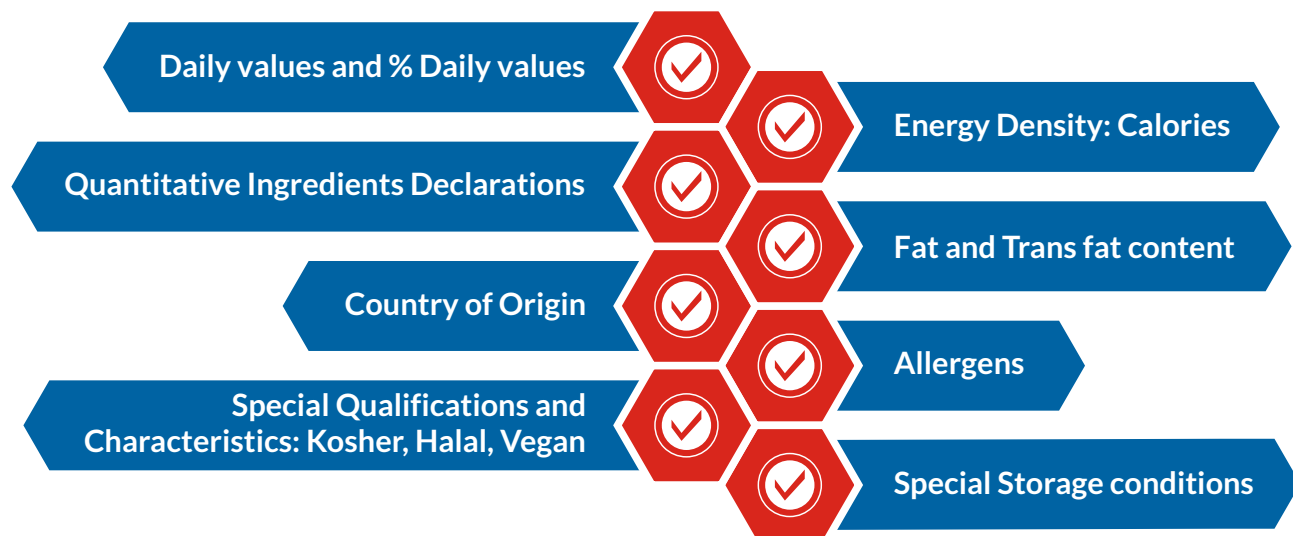
The incredibly useful scheduling module,
extensive quality control management features
and improved structure for the production process
are all highly praised by our customers.

Halim Madid

Innov Business Services, France & Tunisia

INGREDIENTS CALCULATION AND DECLARATION

To avoid the dire consequences of incorrectly and insufficiently labelled products in regulated industries, CompuTec ProcessForce makes sure you know exactly what is in each of your final products and you can declare ingredients with confidence and accuracy.



CompuTec ProcessForce is the only solution on the market that offers the detailed functionalities required by the food and beverage industry whilst being both a solution that is native to SAP Business One and easy to implement and use.

*Lindsay Pointon
Signum Solutions, United Kingdom*

- Calculate nutrients, allergens and contaminants on any item, formula or Bill of Materials
- Base calculations on default sample sizes, serving sizes or containers
- Integrate adherence to regulatory standards into your production processes
- Assign codes in accordance with regulations
- Define alternative code – common, scientific or Codex Alimentarius INS or EAU numbers
- Make factual health and nutritional claims

Additional features for CompuTec Labels users:

- Install templates for rapid data entry and label creation
- Customizable product labeling e.g. free-from labeling such as GM Free, Sugar Free, Dairy Free, Gluten Free etc.

Nutrition Facts

8 servings per container

Serving size 2/3 cup (55g)

Amount per serving

Calories 230

% Daily Value*

Total Fat 8g **10%**

Saturated Fat 1g **5%**

Trans Fat 0g

Cholesterol 0mg **0%**

Sodium 160mg **7%**

Total Carbohydrate 37g **13%**

Dietary Fiber 4g **14%**

Total Sugars 12g

Includes 10g Added Sugars **20%**

Protein 3g

Vitamin D 2mcg 10%

Calcium 260mg 20%

Iron 8mg 45%

Potassium 235mg 6%

* The % Daily Value (DV) tells you how much a nutrient in a serving of food contributes to a daily diet 2,000 calories a day is used for general nutrition advice.

COMPLAINT MANAGEMENT

Regardless of whether the complaint has originated from a customer, a vendor or even internally, CompuTec ProcessForce's complaint management functions provide a framework to ensure each and every issue is handled correctly and the appropriate remedial action is taken in every case.

- Track the progress of returns and samples from customers and suppliers
- Manage the entire lifecycle of complaints
- Trace batches and serial numbers associated with complaints
- Record complaint type, code and action taken
- Trigger quality control tests and product recalls
- Customizable system alerts to ensure swift response times

Designed to give complete transparency over your complaint procedures, CompuTec ProcessForce allows you to manage your complaints using complaint codes, status, date, batch or serial numbers. You can attach notes and images to each complaint or link them to quality control tests. You'll receive alerts, be able to create reports and if necessary instigate hassle-free product recall procedures.

Because all CompuTec ProcessForce users in your enterprise will have access to up-to-date, detailed information about complaints and their current status, all your employees will have the tools to be more responsive. This is particularly advantageous for maintaining excellence in your warehousing practices.



DYNAMIC PRODUCT COSTING

CompuTec ProcessForce features a dynamic costing enhancement to SAP Business One which means complex calculations such as enterprise-wide cost rollups can be carried out in a fraction of the time it would otherwise take.

- Measure financial performance
- Customizable in-depth multi-level product costing
- Dynamic in-memory cost calculations for unprecedented speed
- Multi-structure fixed and variable overhead costs management
- Automatic currency conversion to your working currency

Resource costing

- Machinery – allocate costs to each phase in the machine's operational cycle
- Labor
- Subcontracting

Item costing

- Wide range of cost presentation methods
- Record and calculate coproducts and scrap
- Define costs on a warehouse-by-warehouse basis
- Divide overheads either by value or percentage

Cost Rollups

- Even extremely large and complex rollups can be completed in a matter of minutes
- Material costs and processing costs
- Customizable calculation methods

Manage multiple cost categories for "what-if" simulations and analysis

- Compare current and future costs
- See how improvement projects and price changes will impact production and analyze the potential for savings
- Implement your preferred cost category at the click of a button
- Automatic inventory reevaluation when you select your preferred cost category

Wide range of cost allocation and cost calculation methods based on SAP Business One Item Master Data

- Standard Costing – for items with static costs
- Moving average – for items with volatile costs
- FIFO – for perishable goods
- Batch / Serial Number – when costs for each batch or item purchased tends to vary

Costed Bill of Materials

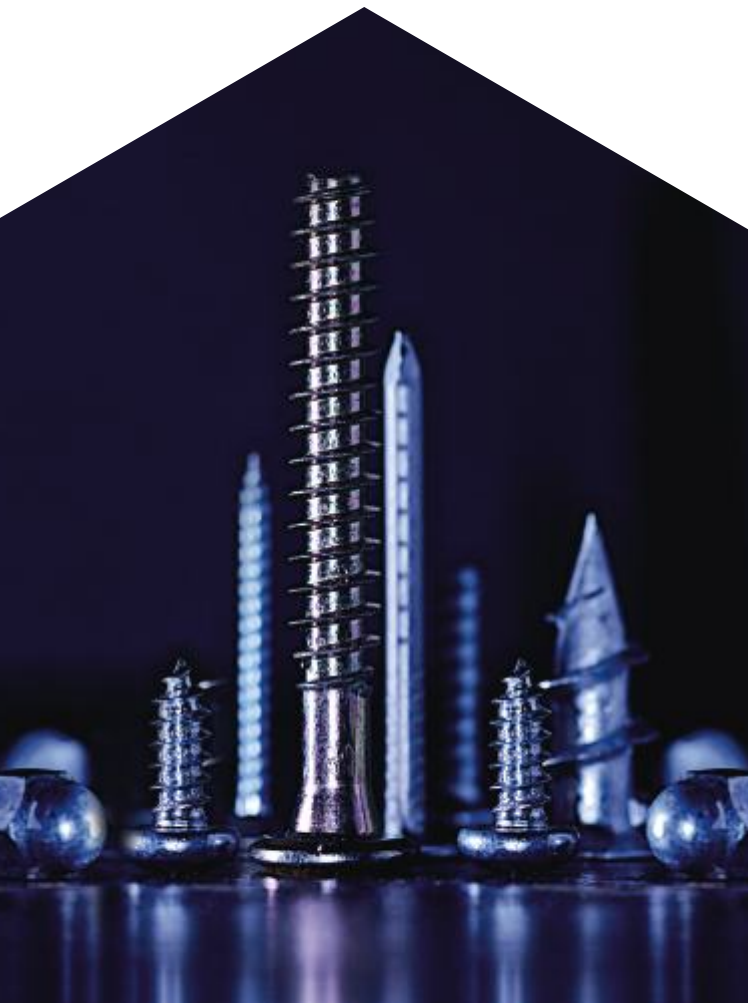
- Check how different suppliers, components or ingredients, machinery, labor and subcontractors will affect the cost of your final product
- Unlimited simultaneous product revisions to help you evaluate the best production materials and methods
- An invaluable tool in negotiating terms and pricing with potential customers and evaluating risk

Production costing analysis – planned vs. actual

- Compare forecasted and real financial performance for each Manufacturing Order
- Analyze production costs and take corrective actions where applicable

Costing reports

- Costing Variance Report
- Production Efficiency Report



Resource Costing

Resource Code 100
Resource Name cutting

Cost Category C01

#	Cost Type	Hourly Rate	Fixed O/H	Fixed O/H %	Value	Other	Sub-Total	Variable O/H	Variable O/H %	Value	Other	Sub-Total	Total	Remarks
1	Queue Time	2.000	3.000	0.000	0.000	1.000	4.000	2.000	0.000	0.000	0.000	2.000	8.000	
2	Setup Time	1.000	2.000	0.000	0.000	2.000	4.000	3.000	0.000	0.000	0.000	3.000	8.000	
3	Run Time	2.000	5.000	0.000	0.000	3.000	8.000	1.000	0.000	0.000	0.000	1.000	11.000	
4	Stock Time	1.000	5.000	0.000	0.000	0.000	5.000	0.000	0.000	0.000	0.000	0.000	6.000	

Update

Cancel

Item Costing

Item Code strawberry jam 200ml
Item Name strawberry jam 200mlRevision Code code00
Cost Category C01
MRP Type MakeValuation Method UoM
Batch Size 1.000

Costing Details		Coproducts		Scrap		Rolled Cost											
#	Warehouse	Type	Price List	Item Cost	Fixed O/H	O/H %	Value	Other	Sub-Total	Variable O/H	O/H %	Value	Other	Sub-Total	Total	Remarks	
1	01	Automat ▼		7.408	3.000	10.000	0.741	0.000	3.741	2.000	10.000	0.741	0.000	2.741	13.889		
2	02	Automat ▼		7.408	3.000	10.000	0.741	0.000	3.741	2.000	10.000	0.741	0.000	2.741	13.889		
3	03	Automat ▼		7.408	3.000	10.000	0.741	0.000	3.741	2.000	10.000	0.741	0.000	2.741	13.889		
4	04	Automat ▼		7.408	3.000	10.000	0.741	0.000	3.741	2.000	10.000	0.741	0.000	2.741	13.889		
5	FR01	Automat ▼		7.408	3.000	10.000	0.741	0.000	3.741	2.000	10.000	0.741	0.000	2.741	13.889		
6	Prod	Automat ▼		7.408	3.000	10.000	0.741	0.000	3.741	2.000	10.000	0.741	0.000	2.741	13.889		
7	Sub Con	Automat ▼		7.408	3.000	10.000	0.741	0.000	3.741	2.000	10.000	0.741	0.000	2.741	13.889		

OK

Cancel

Update Costing

Costed BOM of Materials

Item Code Product1-Std
Item Name Product1-Std
Revision default
Warehouse General Warehouse
Batch Size 100.000
Routing Routing01Cost Category Standard cost
Dynamic calculations
Static calculations
Use real raw materials costs
Use the first-level batch size for c
Use own scrap costs for c
Use own scrap costs for calculateTC Material 66.940 100.00 %
TC Resource 0.000 0.00 %
TC Fixed O/H 0.000 0.00 %
TC Variable O/H 0.000 0.00 %
TC Total 66.940
CC Batch Size 1.000

#	Type	Item	Item	Revision	Werk	Quant	ATL Mat	ATL Res	ATL Tot	ATL Mat	ATL Res	ATL Tot	U. Mat	U. Res	U. Tot	CA Mat	CA Res	CA Tot	CA V. Mat	CA V. Res	CA V. Tot	TC Mat	TC Res	TC Tot	TC V. Mat	TC V. Res	TC V. Tot
1	Final Obj	Product	Product1-Std	00		1.000	66.940	0.000	66.940	0.000	0.000	66.940	0.000	0.000	0.000	0.000	0.000	0.000	0.000	0.000	0.000	66.940	0.000	66.940	0.000	0.000	66.940
2	Item Obj	Product	Product1-Std	00		1.000	66.940	0.000	66.940	0.000	0.000	66.940	0.000	0.000	0.000	0.000	0.000	0.000	0.000	0.000	0.000	66.940	0.000	66.940	0.000	0.000	66.940
3	Item Obj	Product	Product1-Std	00		1.000	66.940	0.000	66.940	0.000	0.000	66.940	0.000	0.000	0.000	0.000	0.000	0.000	0.000	0.000	0.000	66.940	0.000	66.940	0.000	0.000	66.940
4	Raw Mat	Item	Item01	00		1.000	30.000	0.000	30.000	0.000	0.000	30.000	0.000	0.000	0.000	0.000	0.000	0.000	0.000	0.000	0.000	30.000	0.000	30.000	0.000	0.000	30.000
5	Raw Mat	Item	Item02	00		1.000	9.000	0.000	9.000	0.000	0.000	9.000	0.000	0.000	0.000	0.000	0.000	0.000	0.000	0.000	0.000	9.000	0.000	9.000	0.000	0.000	9.000
6	Raw Mat	Item	Item03	00		1.000	23.000	0.000	23.000	0.000	0.000	23.000	0.000	0.000	0.000	0.000	0.000	0.000	0.000	0.000	0.000	23.000	0.000	23.000	0.000	0.000	23.000
7	Raw Mat	Item	Item04	00		1.000	1.000	0.000	1.000	0.000	0.000	1.000	0.000	0.000	0.000	0.000	0.000	0.000	0.000	0.000	0.000	1.000	0.000	1.000	0.000	0.000	1.000
8	Component	Component	Component01	00		1.000	0.000	0.000	0.000	0.000	0.000	0.000	0.000	0.000	0.000	0.000	0.000	0.000	0.000	0.000	0.000	0.000	0.000	0.000	0.000	0.000	0.000
9	Scrap	Scrap	Scrap01	00		1.000	0.000	0.000	0.000	0.000	0.000	0.000	0.000	0.000	0.000	0.000	0.000	0.000	0.000	0.000	0.000	0.000	0.000	0.000	0.000	0.000	0.000
10	Routing	Routing	Routing01	00		1.000	0.000	0.000	0.000	0.000	0.000	0.000	0.000	0.000	0.000	0.000	0.000	0.000	0.000	0.000	0.000	0.000	0.000	0.000	0.000	0.000	0.000
11	Operation	Operation	Operation01	00		1.000	0.000	0.000	0.000	0.000	0.000	0.000	0.000	0.000	0.000	0.000	0.000	0.000	0.000	0.000	0.000	0.000	0.000	0.000	0.000	0.000	0.000
12	Resource	Resource	Resource01	00		1.000	0.000	0.000	0.000	0.000	0.000	0.000	0.000	0.000	0.000	0.000	0.000	0.000	0.000	0.000	0.000	0.000	0.000	0.000	0.000	0.000	0.000
13	Details	Details	Details01	00		1.000	0.000	0.000	0.000	0.000	0.000	0.000	0.000	0.000	0.000	0.000	0.000	0.000	0.000	0.000	0.000	0.000	0.000	0.000	0.000	0.000	0.000
14	Details	Details	Details02	00		1.000	0.000	0.000	0.000	0.000	0.000	0.000	0.000	0.000	0.000	0.000	0.000	0.000	0.000	0.000	0.000	0.000	0.000	0.000	0.000	0.000	0.000
15	Details	Details	Details03	00		1.000	0.000	0.000	0.000	0.000	0.000	0.000	0.000	0.000	0.000	0.000	0.000	0.000	0.000	0.000	0.000	0.000	0.000	0.000	0.000	0.000	0.000
16	Details	Details	Details04	00		1.000	0.000	0.000	0.000	0.000	0.000	0.000	0.000	0.000	0.000	0.000	0.000	0.000	0.000	0.000	0.000	0.000	0.000	0.000	0.000	0.000	0.000
17	Raw Mat	Item	Item01	00		1.000	30.000	0.000	30.000	0.000	0.000	30.000	0.000	0.000	0.000	0.000	0.000	0.000	0.000	0.000	0.000	30.000	0.000	30.000	0.000	0.000	30.000
18	Routing	Routing	Routing01	00		1.000	0.000	0.000	0.000	0.000	0.000	0.000	0.000	0.000	0.000	0.000	0.000	0.000	0.000	0.000	0.000	0.000	0.000	0.000	0.000	0.000	0.000
19	Operation	Operation	Operation01	00		1.000	0.000	0.000	0.000	0.000	0.000	0.000	0.000	0.000	0.000	0.000	0.000	0.000	0.000	0.000	0.000	0.000	0.000	0.000	0.000	0.000	0.000
20	Resource	Resource	Resource01	00		1.000	0.000	0.000	0.000	0.000	0.000	0.000	0.000	0.000	0.000	0.000	0.000	0.000	0.000	0.000	0.000	0.000	0.000	0.000	0.000	0.000	0.000
21	Details	Details	Details01	00		1.000	0.000	0.000	0.000	0.000	0.000	0.000	0.000	0.000	0.000	0.000	0.000	0.000	0.000	0.000	0.000	0.000	0.000	0.000	0.000	0.000	0.000
22	Details	Details	Details02	00		1.000	0.000	0.000	0.000	0.000	0.000	0.000	0.000	0.000	0.000	0.000	0.000	0.000	0.000	0.000	0.000	0.000	0.000	0.000	0.000	0.000	0.000
23	Details	Details	Details03	00		1.000	0.000	0.000	0.000	0.000	0.000	0.000	0.000	0.000	0.000	0.000	0.000	0.000	0.000	0.000	0.000	0.000	0.000	0.000	0.000	0.000	0.000
24	Details	Details	Details04	00		1.000	0.000	0.000	0.000	0.000	0.000	0.000	0.000	0.000	0.000	0.000	0.000	0.000	0.000	0.000	0.000	0.000	0.000	0.000	0.000	0.000	0.000
25	Routing	Routing	Routing01	00		1.000	0.000	0.000	0.000	0.000	0.000	0.000	0.000	0.000	0.000	0.000	0.000	0.000	0.000	0.000	0.000	0.000	0.000	0.000	0.000	0.000	0.000
26	Operation	Operation	Operation01	00		1.000	0.000	0.000	0.000	0.000	0.000	0.000	0.000	0.000	0.000	0.000	0.000	0.000	0.000	0.000	0.000	0.000	0.000	0.000	0.000	0.000	0.000

OK

Cancel

Refresh

Expand All

Collapse All

MATERIAL RESOURCE PLANNING

Finding the balance between supply and demand

CompuTec ProcessForce's Material Resource Planning (MRP) functionality orchestrates the flow of components, ingredients and parts throughout your organization.

- Optimize MRP by means of true data integrity
Up-to-date, error-free data will allow you to plan manufacturing activities, delivery schedules and purchasing activities, offer recommendations and generate real-time reports
- Run MRP for default product revisions
- Forecast the flow of inventory
- Receive system recommendations about material reserves
- Ensure availability of materials for production and of final goods for shipping
- Maintain minimal stock levels to free up capital and reduce warehousing costs while still preventing shortages
- Shorten lead times and enhance productivity
- Promise accurate lead times to your customers and increase customer satisfaction

REPORTING AND ANALYTICS

CompuTec ProcessForce draws on your data and calculations to generate a wide range of cost and production efficiency reports. With this information at your fingertips you can ensure your production processes are optimized from start to finish and your machine park is operating at maximum efficiency.

- Real-time analytics for fast, data-driven decision making
- Compare and analyze current and historical performance to determine areas for improvement and take action
- Drill down key data to get the level of detail you need
- Choice of Reporting Tools: User Queries, SAP Crystal Reports, Semantic Layer, KPI and Dashboards widgets, Excel Reports and Interactive Analysis, SAP Analytics Cloud
- Set up automated triggers for report creation and email reports to the appropriate recipients
- Identify the causes of downtime and other areas for improvement and decide on the best investment strategies to improve efficiency in your production process.

Manufacturing Order Reports

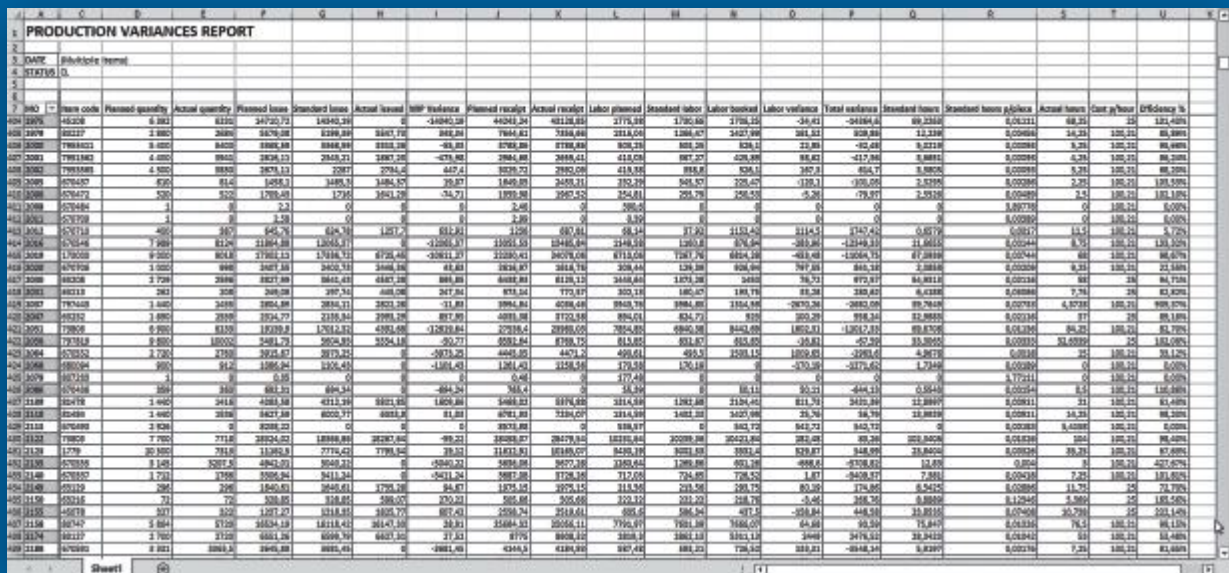
- Compare the planned and actual costs of the entire production process for each order
- Break down costs into material and resource costs and compare planned vs. actual values
- Review current resource status along with its planned and current workflow

Supplier Scorecard – evaluate suppliers' performance based on information about quality, quantity accuracy and punctuality of deliveries.

Non-Conforming Materials Report – report non-conforming material identified during Quality Control procedures or inventory movements.

Certificate of Analysis (CoA) – confirm the compliance of regulated products.

CompuTec ProcessForce data can be used with all SAP HANA reporting and analytics capabilities to create a wide variety of other reports depending on your needs.



CompuTec

[illegible]

BESPOKE EXTENSIONS

All CompuTec ProcessForce customers have access to CompuTec AppEngine, an OData v4 application programming interface. This opens up infinite possibilities.

- Aids integrations with machinery and other IT solutions based on HTTP protocols
- Develop or commission your own custom CompuTec ProcessForce extensions and plugins with HTML based user interfaces
- Ideal for very niche businesses with extremely specialized requirements

OTHER COMPUTEC SOLUTIONS

#CompuTec **PDC**

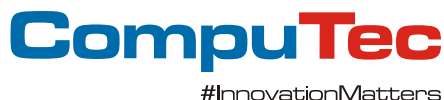
An extension for CompuTec ProcessForce to record real manufacturing operations timings and communicate easily and effectively with the staff on the shop floor.

#CompuTec **WMS**

A logistics solution to manage your warehousing processes from handheld devices and optimize how they support your production processes.

#CompuTec **Labels**

A label printing management solution which ensures your inventory is labelled accurately and exactly according to your particular business needs.



CompuTec S.A.
Sikorskiego 9
66-200 Świebodzin, Poland
tel. +48 68 38 188 00
e-mail info@computec.pl
www.computec.pl
www.processforce.world

VISIT OUR WEBSITE



Among the first companies in the world to use SAP Business One ourselves, CompuTec S.A. now develops intelligent and reliable SAP Business One solutions for advanced manufacturers and logistics enterprises and has become one of the most awarded SAP Business One Partners in Middle and Eastern Europe. Our solutions support the operations of businesses on six continents across a wide range of industries from food and beverage to life sciences to plastics to the automotive industry.

With a focus on product innovation and responsiveness to global manufacturing trends, our aim is to provide solutions that optimize efficiency, simplify operational practices and facilitate growth for small and medium-sized enterprises as well as subsidiaries of larger organizations.