

**#CompuTec**  
**PDC**

**Plant Data Capture**

Uniting the back office and the shop floor

# #CompuTec PDC

## Plant Data Capture

An extension for CompuTec ProcessForce to record real manufacturing operations timings and communicate easily and effectively with the staff on the shop floor.

- ✓ Supervise your machine park
- ✓ Control your production resources
- ✓ Track production flow
- ✓ All in real-time
- ✓ All directly from your production line

### KEY BENEFITS

- On-the-spot data access
- Live progress monitoring
- Multiple simultaneous worktime registrations
- Wide range of customization options
- Quick and straightforward implementation
- Full scalability for growing enterprises
- Improved data accuracy
- More precise product costing
- Reduce time spent on manual data entry and minimize paperwork
- User-friendly and intuitive
- Get the most out of CompuTec ProcessForce





## SUPPORT THE MANUFACTURING PROCESS VIA PRODUCTION PANELS

A CompuTec ProcessForce application designed to connect the shop floor to the office, CompuTec PDC leverages touchscreen technology to organize and gain insights into the workflow in your production area.

- Inform employees about their assigned tasks and allow them to select unassigned tasks to undertake themselves
- Ensure that tasks are carried out with those with the appropriate skillsets and certifications and guarantee fair division of labor
- Record time spent on specific tasks and operations
- Check task and resource status
- Attach a wide range of supplementary material to each task that can be displayed on your touchscreen panels for your employees' reference
- Oversee and organize your entire machine park and its operations

BATCH NUMBER	BIN LOCATION	BATCH ATTR2	BATCH ATTR1	REVISION CODE	REVISION NAME	QUANTITY	REMAINING QUANTITY	ISSUED QUANTITY	ON OTHER PICK	SELECTED QUANTITY	ASSIGN	PRINT
2014-12-07-1664	01-01					100,000	100,000	0,000	0,000	0,000		
2014-06-24-104516	01-01					97,232	97,232	0,000	0,000	0,000		
2014-06-24-095052	01-01					100,000	100,000	0,000	0,000	0,000		
24-06-20-14001	01-01					93,000	93,000	0,000	0,000	0,000		
2014-06-24-092232	01-01					77,000	77,000	0,000	0,000	0,000		
999/001	01-01					25,000	25,000	0,000	0,000	0,000		
1000-10-1004	01-SYSTEM-BIN-LOCATION					1,000,000	1,000,000	0,000	0,000	0,000		
1000-10-1003	01-SYSTEM-BIN-LOCATION					986,800	986,800	0,000	0,000	0,000		
1000-10-1001	01-SYSTEM-BIN-LOCATION					886,000	886,000	0,000	0,000	0,000		
4314	01-01					4,000	4,000	0,000	0,000	0,000		
14141	01-01					3,000	3,000	0,000	0,000	0,000		
105	01-01					3,000	3,000	0,000	0,000	0,000		
100-000-1000	01-01					10,300	10,300	0,000	0,000	0,000		
1000-001	01-01					35,600	35,600	0,000	0,000	0,000		
1000-000011	01-01					946,330	946,330	0,000	0,000	0,000		
134341	01-01					1,000	1,000	0,000	0,000	0,000		
104	01-01					4,000	4,000	0,000	0,000	0,000		
3434	01-01					2,000	2,000	0,000	0,000	0,000		
2013-07-10-555	01-SYSTEM-BIN-LOCATION					91,000	91,000	0,000	0,000	0,000		
2013-07-10-563	01-SYSTEM-BIN-LOCATION					200,000	200,000	0,000	0,000	0,000		
2013-08-28-589	01-SYSTEM-BIN-LOCATION					1,000,000	1,000,000	0,000	0,000	0,000		

## WORK TIME REGISTRATION

- Record set-up time, run-time and downtime accurately and consistently as work is completed.
- Compare planned, booked and actual times and quantities
- Numerical and graphical work time comparisons make it easier to assess performance and plan future operations
- Record time for individual employees or for teams or groups of operatives
- Provide your cost accounting team with precise, reliable data
- Control and register timings and causes of downtime

Task Panel			
7435		(05) Prep (10) 04 Prep	
Product-A - Product-A		31.01.19 09:55 AM	
0h 0m		50,000000 EA	
Planned	0h 0m	Booked	0h 7m
Actual	0h 0m		
Planned	1h 0m	Booked	49h 59m
Actual	0h 22m	Reported Quantity	1,010000 EA
Actual	0h 0m		
Details			
Start	End	Duration (m)	Completed
31.01.19 09:55 AM	31.01.19 10:17 AM	0h 22m	Run

## DATA INPUT

### Manual Data Entry

Useful for unique tasks with unique parameters and work times.

### Touchscreen Production Panels

Quick and Convenient Data Entry directly from the shop floor.

### Radio Frequency Identification (RFID) devices

RFID cards, fobs and watches make for simple and time-efficient logins.

### GS1 barcode scanners

Reduce data entry time and remove the potential for errors.

- Logins
- Add new tasks
- Register worktime
- Issue goods to production

### Industrial weight scales

Weight scales integration ensures a faster and more precise picking process and includes a weight scales wizard which facilitates picking for percentage based recipes.



## QUICK TIME BOOKING

Record time bookings for multiple manufacturing orders from one panel instead of going through the laborious process of creating separate task tiles for each operation.

- Register queue, setup, run and stock times
- Filter tasks on a device-by-device basis so the user only sees the tasks relevant to them
- Save defined sort and filter parameters for quick and easy access next time
- Improved overall view of operations
- Less confusion and more consistency throughout your documents and operations

QUICK WORK REGISTRATION

Status: Started Operation: All- Resource: All- Doc Number From: 18055 Doc Number To: 18065 Time Types: Queue Setup Run Stock Manufacturing Required Date From: 1/1/0001 Manufacturing Required Date To: 10/30/2018 Task Start Date from: 1/1/0001

All Lines Saved Lines

KEY	DOCUMENT NUMBER	DOCUMENT STATUS	MANUFACTURING REQUIRED DATE	ITEM CODE	ITEM NAME	PLANNED QUANTITY	ROUTING	OPERATION CODE	OPERATION NAME	RESOURCE CODE	RESOURCE NAME	TASK START DATE	TYPE	DURATION (M)	LINE STATUS	QUANTITY	REM.
1	18055	Started	04/29/2018	CPM0001	CPM Item TD1	58	metal routing	100	Cutting	100	cutting	04/25/2018	Setup	0	Current	0.000	
1	18055	Started	04/29/2018	CPM0001	CPM Item TD1	58	metal routing	100	Cutting	100	cutting	04/25/2018	Queue	10	Current	250.000	
1	18055	Started	04/29/2018	CPM0001	CPM Item TD1	58	metal routing	100	Cutting	06	Labour	04/25/2018	Run	0	Current	0.000	
1	18055	Started	04/29/2018	CPM0001	CPM Item TD1	58	metal routing	100	Cutting	06	Labour	04/25/2018	Setup	0	Current	0.000	
1	18055	Started	04/29/2018	CPM0001	CPM Item TD1	58	metal routing	100	Cutting	06	Labour	04/25/2018	Queue	0	Current	0.000	
2	18055	Started	04/29/2018	CPM0001	CPM Item TD1	58	metal routing	102	drilling	102	drilling	04/20/2018	Run	20	Current	250.000	
2	18055	Started	04/29/2018	CPM0001	CPM Item TD1	58	metal routing	102	drilling	102	drilling	04/20/2018	Setup	0	Current	0.000	
2	18055	Started	04/29/2018	CPM0001	CPM Item TD1	58	metal routing	102	drilling	102	drilling	04/20/2018	Queue	0	Current	0.000	
2	18055	Started	04/29/2018	CPM0001	CPM Item TD1	58	metal routing	102	drilling	06	Labour	04/20/2018	Run	0	Current	0.000	
2	18055	Started	04/29/2018	CPM0001	CPM Item TD1	58	metal routing	102	drilling	06	Labour	04/20/2018	Setup	30	Current	250.000	
2	18055	Started	04/29/2018	CPM0001	CPM Item TD1	58	metal routing	102	drilling	06	Labour	04/20/2018	Queue	0	Current	0.000	
3	18055	Started	04/29/2018	CPM0001	CPM Item TD1	58	metal routing	103	mounting	103	mounting	04/22/2018	Run	0	Current	0.000	
3	18055	Started	04/29/2018	CPM0001	CPM Item TD1	58	metal routing	103	mounting	103	mounting	04/22/2018	Setup	10	Current	30.000	
3	18055	Started	04/29/2018	CPM0001	CPM Item TD1	58	metal routing	103	mounting	103	mounting	04/22/2018	Queue	0	Current	0.000	
3	18055	Started	04/29/2018	CPM0001	CPM Item TD1	58	metal routing	103	mounting	06	Labour	04/22/2018	Run	0	Current	0.000	
3	18055	Started	04/29/2018	CPM0001	CPM Item TD1	58	metal routing	103	mounting	06	Labour	04/22/2018	Setup	50	Current	10.000	
3	18055	Started	04/29/2018	CPM0001	CPM Item TD1	58	metal routing	103	mounting	06	Labour	04/22/2018	Queue	0	Current	0.000	
4	18055	Started	04/29/2018	CPM0001	CPM Item TD1	58	metal routing	marking	marking	Tampoon tsisk	Tampoon tsisk	04/25/2018	Run	0	Current	0.000	
4	18055	Started	04/29/2018	CPM0001	CPM Item TD1	58	metal routing	marking	marking	Tampoon tsisk	Tampoon tsisk	04/25/2018	Setup	0	Current	0.000	
4	18055	Started	04/29/2018	CPM0001	CPM Item TD1	58	metal routing	marking	marking	Tampoon tsisk	Tampoon tsisk	04/25/2018	Queue	0	Current	0.000	
5	18055	Started	04/29/2018	CPM0001	CPM Item TD1	58	metal routing	packaging	packaging	packaging	packaging	04/25/2018	Run	0	Current	0.000	

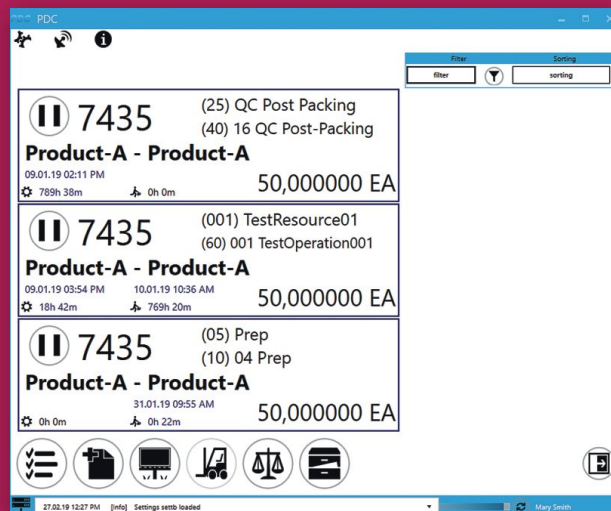
Results: 5 10 20 50 Total time: 0h 0m FIRST PREV Page 1 of 1 NEXT LAST





## MANAGE PRODUCTION TASKS

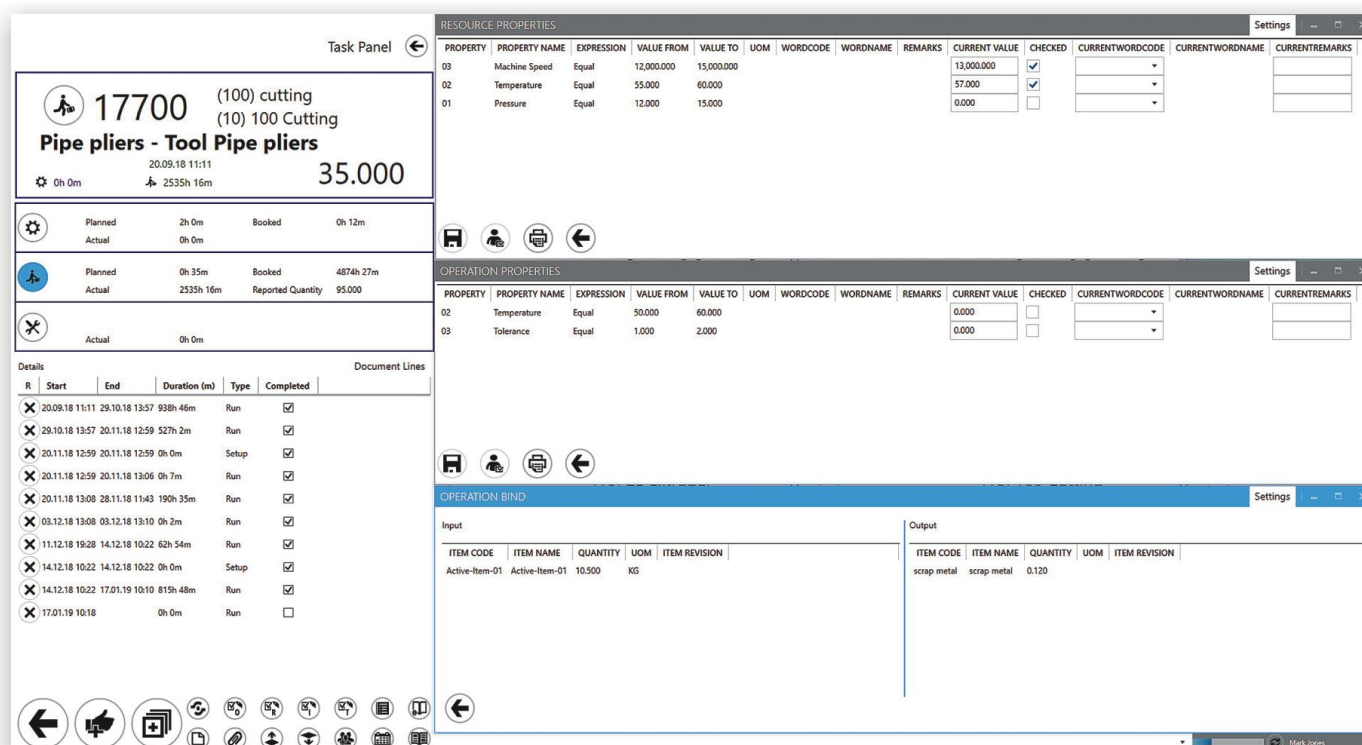
- Filter, group and sort tasks so you can focus on those most relevant to you
- Prioritize urgent tasks or manufacturing orders with shorter lead times
- Supervise the status of the production orders and take real-time corrective action to maintain a streamlined production process

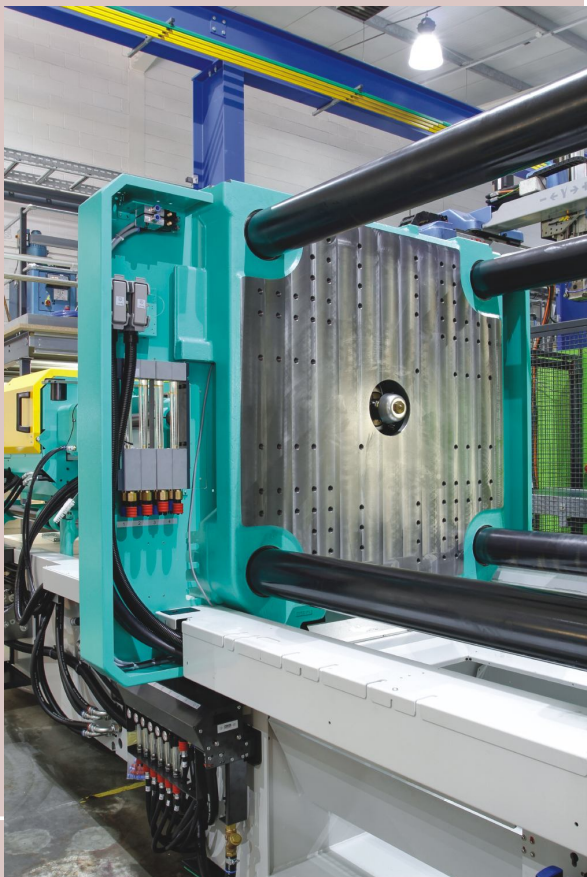


## MANAGE RESOURCES

Users with management privileges can access a wealth of data about each individual resource and the machine park as a whole to aid them in streamlining the production process and reveal where corrective actions are needed.

- View each resource's work history, current status and upcoming scheduled tasks
- Monitor planned and booked dates
- Compare planned and reported product quantities





## INVENTORY MANAGEMENT FROM THE FACTORY FLOOR

For enterprise-wide efficiency, a number of CompuTec ProcessForce documents can be created from your production area in CompuTec PDC. These documents will automatically be added to your company database and be immediately accessible through your SAP Business One interface ensuring data consistency for factory floor and back office alike.

## INVENTORY MOVEMENT DOCUMENTS

Within CompuTec PDC your production operatives can create Pick Order and Pick Receipt documents, which are lists of inventory to be issued to and received from or to production whether it be raw materials, final goods, coproducts or scrap. You can also configure your system so that CompuTec ProcessForce will automatically create the relevant Goods Issue or Goods Receipt (along with corresponding Batch Master Data) in the background when these lists are created.

### Quick Receipt

☒ Keep Visible

Quantity: 35.000/35.000

Packs: ∞/∞

Classification: 25231

Batch: 177

Quantity: 35.000

Item Code: Pipe pliers

Revision: code00:PG622V

Pack Size: 0

Item Name:

Tool Pipe pliers

Warehouse:

04

Receipt Location:

Attribute	Value
Revision Code	code00
Revision Name	PG622V
Status	Locked

Scale

Add

Add Next

Cancel







## CUSTOMIZATION

Every production hall is different. Each business has their own ideas about what they need to know and who should know it. At CompuTec one of our key aims in all our solutions is to offer our customers maximum flexibility so we designed CompuTec PDC with as many configuration options as we could conceivably think of.

- Keep your production team focused on tasks and data that is relevant to them by customizing each user's interface on an individual basis.
- Set up your forms so that you only record and display the data that you need.
- For those with incredibly specialized needs we can offer other customization options on a case-by-case basis.

If that's not enough, our customers have access to CompuTec AppEngine which means they can commission their own bespoke extensions for our products too.

A screenshot of the CompuTec PDC software interface. The top section is a 'Task Panel' with a back arrow icon. It displays a large 'II' icon, the number '7435', and a list of tasks: '(05) Prep' and '(10) 04 Prep'. Below this, it says 'Product-A - Product-A' and '50,000000 EA'. The middle section shows a table with columns for 'Planned', 'Actual', 'Booked', and 'Reported Quantity'. The bottom section is a 'Details' table with columns for 'R', 'Start', 'End', 'Duration (m)', 'Type', and 'Completed'. A dropdown menu is open, showing various options like 'Operation Properties', 'Resource Properties', 'Item Details', 'Tools', 'MOR Report', 'Bom Report', 'Instruction', 'Tech Instruction', 'Attachments', 'Goods Issue', 'Goods Receipt', 'Assign To', 'Activities', 'QuickReceipt', 'QC Test Properties', 'Input Output Properties', and 'WeightWizard'. The 'QuickReceipt' option is highlighted.

## OTHER COMPUTEC SOLUTIONS

#CompuTec

**ProcessForce**

An intelligent solution for advanced manufacturing designed to handle complex production processes in a simple way and accommodate the most precise data management needs.

#CompuTec

**WMS**

A logistics solution to manage your warehousing processes from handheld devices and optimize how they support your production processes.

#CompuTec

**Labels**

A label printing management solution which ensures your inventory is labelled accurately and exactly according to your particular business needs.

**CompuTec**  
#InnovationMatters

**CompuTec S.A.**

Sikorskiego 9

66-200 Świebodzin, Poland

tel. +48 68 38 188 00

e-mail [info@computec.pl](mailto:info@computec.pl)

[www.computec.pl](http://www.computec.pl)

[www.processforce.world](http://www.processforce.world)

Among the first companies in the world to use SAP Business One ourselves, CompuTec S.A. now develops intelligent and reliable SAP Business One solutions for advanced manufacturers and logistics enterprises and has become one of the most awarded SAP Business One Partners in Middle and Eastern Europe. Our solutions support the operations of businesses on six continents across a wide range of industries from food and beverage to life sciences to plastics to the automotive industry.

With a focus on product innovation and responsiveness to global manufacturing trends, our aim is to provide solutions that optimize efficiency, simplify operational practices and facilitate growth for small and medium-sized enterprises as well as subsidiaries of larger organizations.

VISIT OUR WEBSITE

